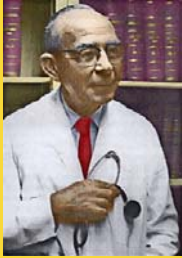


Tinsley Randolph. Harrison, M.D.  
1900 -1978



**SSCI Officers**

Robert T. Means, Jr., M.D.  
President

James Oates, M.D.  
President-Elect

Monica Farley, M.D.  
Secretary-Treasurer

**SSCI Executive Director**

Joan G. Kemp  
U. of Alabama at Birmingham  
Comprehensive Cancer Ctr.  
1802 Sixth Avenue South  
NP 2555  
Birmingham, AL 35294-3300  
205-934-5077 (ph)  
205-975-7428 (fax)  
joan.kemp@ccc.uab.edu

**The American Journal of the  
Medical Sciences**

David W. Ploth, M.D. Editor  
Kathleen Kelly, Managing Editor

**In This Issue Page**

2012 SRM Recap	2
2013 Annual Meeting Information	3
2013 Nephrology and Osteoporosis & Bone Health Young Investigator's Forum	3
New Workshop - 2013 SRM	3
2013 Meeting Registration Details	3
2013 Founders' Medal Award Winner	3
SSCI Committee Reports	4,5
SSCI Newly Elected Members Update & Closing Comments	5
AJMS Update	6

**Southern Society for Clinical Investigation**

**Newsletter**

**July 2012**



**Recap of the 2012  
Southern Regional Meeting**

The Southern Regional Meeting and annual scientific session of the Southern Society for Clinical Investigation (SSCI) was held in February at the Intercontinental New Orleans. Excellent educational programs were presented by all participating Societies. The 2012 meeting saw a continued growth in attendance, as evidenced over the past 6 years: 405 registrants in 2006; 555 in 2008; 633 in 2010; and 684 in 2012.

SSCI members in attendance has also risen over the same period; from 166 in 2006 to 212 at the 2012 meeting. The percentage of trainees in attendance has increased progressively from 44% in 2006 to 59% in 2012.

Podium and poster presentations have likewise followed this positive pattern of growth: from 348 abstracts in 2006, to 555 in 2012. The largest number of abstracts on the program (75) were presented by trainees from LSU/New Orleans. Other schools with >20 papers on the program were: University of Tennessee Health Science Center (57); University of Alabama at Birmingham (50); Tulane University (49); University of Mississippi (33); University of Oklahoma (29); and Texas Tech University Health Science Center-Lubbock (28).

Based on abstract priority ranking, a great many awards were bestowed upon trainees by participating societies. These prizes totaled more than \$62,000, with 60% in the form of trainee travel awards. In addition to these awards, the SSCI provided \$23,000 for the NYIF trainee travel awards and \$12,000 for OBYIF trainee travel awards.

The Trainee Reception as well as the Mentored Poster Session late Thursday afternoon was again a huge success with high attendance.

The President's Symposium on Friday morning featured presentations by 2 opinion-leaders: Professors Ivor Benjamin (U. Utah) and Buddhadeb Dawn (U. Kansas), who presented their perspectives into newer insights into the pathophysiology of congestive heart failure. The Joint Plenary session on Saturday morning focused on "The Cardiometabolic Syndrome: Pathophysiological Insights and Clinical Features" with 8 distinguished speakers from the southeastern region sharing their knowledge with excellent, informative presentations.

(continued on page 2)

**Call For Abstracts for 2013 Southern Regional Meeting**

Visit the SSCI website: [www.ssciweb.org](http://www.ssciweb.org)  
for Call for Abstracts and information for both the  
SSCI Nephrology & Osteoporosis & Bone Health  
Young Investigators' Forums

**Abstract Deadline is October 12**

## Recap of the 2012 Southern Regional Meeting (continued from page 1)

At the Chairs Advisory Council, held Friday morning, President Weber brought up a topic for discussion with the chairs of medicine and divisional leadership in attendance. The issue: Does the current training program curriculum for residents in internal medicine and specialty fellows adequately include principles of pathophysiology? As a corollary, does their curriculum adequately represent the art of clinical reasoning, which is championed by Dr. Lee Hamm, chair of medicine at Tulane University School of Medicine? The ensuing discussion led to a consensus that: an upgrade to resident curriculum should be considered and merited further discussion; each institution

would draw upon the pathophysiology course materials they currently offer to their medical students and these materials could then serve as an individualized strategy for each program and would eliminate a "one strategy fits all" approach; and a committee of interested parties would be formed to continue the discussion.

Interested parties are invited to submit their suggestions to Dr. Lee Hamm, chair of the Curriculum Reform Committee at Tulane University School of Medicine, Email: lhamm@tulane.edu

### The SSCI recognizes the following award recipients for 2012:

Dr. Paul Munter, UAB - Tinsley Harrison Award

Drs. Thorsten Leucker, *University of Louisville*, Yaser Cheema of *University of Tennessee HSC* and Karla Miranda of *UT Southwestern Medical Center* were the 1st, 2nd and 3rd place winners of the SSCI Young Investigator Award.

Dr. Harry S. Saag, UAB - 1st Annual SSCI Young Investigator Award in General Internal Medicine

SAFMR Junior Faculty Research Award Winners:

Drs. Ebenezer Nyenwe, *University of Tennessee HSC*, Quoc Nguyen, *Tulane School of Public Health*, Lovie Lewis Rodgers, *Xavier University* and Lan Luu, *Louisiana State University HSC*

The 1st annual SSCI Clinical Investigation Osteoporosis Young Investigators' Forum was held the day before the official start to the SRM. Presentations were given by 13 trainees involving original research (7) and case reports (6).

Basic & Clinical Science Category winners : Drs. Emily McIntosh, *Emory*, Richard Lee, *Duke* and Vivienne Yoon *UT Southwestern Medical Center*

Case Report Category winners: Drs. Deepti Bahl, *UAB*, and Janie C. Bruce *University of Mississippi Medical Center*

Nephrology Young Investigator' Forum

Basic Science: award winners Drs. Albofazi Zarjou\*, *UAB*, Gentzon Hall, *Duke*, David I. Ortiz-Melo, *Duke*

Clinical Science award winners:: Saugar Maripuri,\* *Vanderbilt*, Nishank Jain, *UT Southwestern*, Berket Alemu, *U. Mississippi Medical Center*

\* These winners went on to complete at the National Competition this spring. Dr. Zarjou won 3rd place and Dr. Maripuri won 2nd place in their respective categories.

## SSCI Young Investigator Awards

The SSCI Young Investigator Awards are offered to recognize and encourage excellence in investigation by physicians and medical students during research training.

**Eligibility:** Medical students, combined MD/PhD students, interns, residents and post-doctoral physicians who are in research training or were in research training June 2012 are eligible. Post-doctoral research training may be considered to extend for a period of up to 3 years and time spent in strictly clinical fellowships need not count against this. The applicant must

be the first author of the abstract submitted in competition for the award and will plan to present the paper during the scientific sessions of the Southern Regional Meetings. Please note that it is not necessary for the senior author to be a member of the SSCI.

**Procedure:** Abstracts will be submitted for the 2013 Annual Meeting of the Southern Society for Clinical Investigation according to the usual procedure described in the instructions on awards consideration accompanying the abstract form.

**Deadline:** The submission deadline of the abstracts and application for the SSCI Young Investigator Award is **October 12, 2012.**

**\*\*Please note that nomination letters from the senior investigator or mentor and the Division Director or Department Chairman are required and should include a statement of the candidate's role in the study. In order to be eligible for consideration of these awards, the nomination letter (s) should be uploaded on the website at the time of abstract submission.**

## 2013 Annual Meeting

The 67<sup>th</sup> Annual Meeting will be held February 21-23, 2013 at the InterContinental New Orleans.

Please make plans to attend as we have some special events planned for this meeting. Partners of this joint meeting include the Southern Section of the American Federation for Medical Research, Southern Society for Pediatric Research, Academic Pediatric Association, Southern Society for General Internal Medicine **and our newest partner, the American Society of Nutrition.**

The joint meeting will begin with subspecialty sessions

and workshops, a welcoming reception and a mentored poster session Thursday afternoon followed by various subspecialty club dinners. Scientific sessions will start Friday morning.

This year's Joint Plenary will feature another national epidemic "Neuroprotection Across a Lifetime". Our guest speakers will discuss current research into coming neuroprotective therapies.

### **HOTEL RESERVATIONS:**

Those who wish to make their reservations early, the hotel reservation form is also included in the Call for Abstracts.

**NOTE:** To obtain the special room rate, be sure to use the reservation forms provided by the SSCI. When making your reservation by telephone, you must mention *Southern Regional Meetings*, or you will not receive the special room rate provided to members by the hotel. *Therefore, please indicate that you are attending the Southern Regional Meetings when making reservations.*

The deadline for hotel reservations at our convention rate and the hold on the room block is January 18, 2013.

**Reservations can be made online at**

<https://resweb.passkey.com/go/SSCI2013>

**Or call  
Intercontinental  
New Orleans  
at  
1-800-235-4670**

The 13th Annual SSCI Nephrology and the 2nd Annual Osteoporosis & Bone Health Young Investigators Forum will be held on Wednesday, February 20, 2013. Abstract deadline for the 2013 Forum is October 12.

## 2013 SSCI Presidential Symposium

**Speakers for the symposium are Drs. James Barton, Birmingham, AL and Cindy Roy, Johns Hopkins University**

**Symposium Title: *Iron Metabolism: Bedside to Bench and Back Again***

### **NEW workshop for 2013 SRM**

#### **"Nuts and Bolts of Communicating Your Work"**

Whether scholarly pursuits are educational-related or clinical or bench research-related, trainees and junior faculty can advance their careers by developing and honing communication skills. With the explosive growth of technology, presentation and publication methods have changed dramatically and will likely continue to evolve. Basic and intermediate aspects of how to communicate one's work will be presented.

*"Dues" and Don'ts... When paying your dues, you will now see a line for donating to the SSCI. All donations will receive a thank you letter with required IRS information, so DO give generously and DON'T miss an opportunity to support the SSCI!*

Congratulations to Dr. L. Lee Hamm, III Tulane University winner of the 2013 SSCI Founders' Medal Award!



## SSCI COMMITTEE UPDATE

**Abstracts being presented at the 2013 Southern Regional Meeting will be printed in the February issue of the *Journal of Investigative Medicine***

### **Mentoring Committee**

Committee Chair: Dan Villarreal  
Upstate Medical University, Syracuse, NY

Once again, this year's mentored poster session was a success. Mentoring categories were expanded to include Clinical Nutrition and Neurology, chaired by Drs. Becky Costello (NIH) and Marian Evatt (Emory), respectively. The goal of the poster session is to promote in-depth discussions and to provide constructive criticism, advice and support to young investigators. The feedback from both the presenters and mentors have proven

this to be a successful endeavor. We thank all who submitted a poster, as well as those who gave of their time to mentor.

### **Publications Committee**

Committee Chair: Tonette Krousel-Wood  
Ochsner University

The committee is working with *The AJMS* to explore innovative approaches to meet the needs of the subscribers as well as the continuous improvement of *The Journal*. We welcome SSCI members to join our efforts by participating on the Publications

*The SRM is pleased to announce the partnership of the American Society of Nutrition (ASN)*



### **A Commentary on Medical Education**

The following article, authored by Dr. Jesse Roman et al, was based on the outcome of a Career Pathways Workshop, held at the 2011 SRM. Please click the link below to enjoy the article entitled: *Recruitment and Retention in Academic Medicine—What Junior Faculty and Trainees Want Department Chairs to Know*  
<http://www.ssciweb.org/MAJ201682.pdf>

Committee. All nominees will be forwarded to the SSCI Council for consideration at the February 2013 meeting in New Orleans.

### **Website Committee**

Committee Chair: Jim Oates  
Medical University of South Carolina

In addition to general maintenance of the website, which includes updating information about awards and upcoming meetings, the Website Committee has been working on ways of increasing interactions with members through the website,

Twitter, and Facebook. At the mid-year retreat, the committee was charged with developing a website for the meeting that is more functional than the current one. The meeting page will likely be a central place for registration, hotel information, abstract submission, and session selection.

The committee is currently pricing upgrade options that would allow individuals with smart phones to browse and select sessions to then be automatically placed into mobile calendars.


For the 2013 meeting, the committee will organize interviews with trainees and former award winners who have progressed in their careers to describe how the Southern Regional Meeting has given them the experience and skills necessary to progress in an academic career.

The Website Committee has also agreed to use its resources to broadcast a call to the general membership for service on key committees.

## SSCI COMMITTEE UPDATE (continued)

### Membership Committee

Committee Chair, Jesse Roman  
University of Louisville

The main strength of the SSCI is in its diverse and talented membership. It is for this very reason that the Membership Committee is working diligently to attract more members to the SSCI, while assisting other committees in their efforts to serve the needs of the SSCI members. The SSCI extends a sincere welcome to the following members.. 

This year, the committee will engage in activities to further increase our membership through partnering with academic departments and other SRM organizations. The committee will also re-evaluate membership nomination criteria and submission deadlines. Finally, the committee will discuss ways to attract junior academicians to our organization. To provide recommendations or to participate in the activities mentioned above, please contact the committee chair at [j.roman@louisville.edu](mailto:j.roman@louisville.edu).

## 2012 NEW MEMBERS

John W. Baddley, MD, MSPH	University of Alabama at Birmingham
Nauman Chaudary, MD*	University of Mississippi Medical Center
Stephen Clement, MD	Merck
Pranab Das, MD	University of Tennessee Health Science Ctr.
Randall S. Davis, MD	University of Alabama at Birmingham
Thomas G. DiSalvo, MD, MPH, MBA	Vanderbilt University Medical Center
Tibor Fulop, MD	University of Mississippi Medical Center
William Geisler, MD, MPH	University of Alabama at Birmingham
Joseph A. Hill, MD, PhD	University of Texas Southwestern Med Ctr.
Amir Kazory, MD	University of Florida
Cathy J. Lazarus, MD	Tulane University
Brenden McGuire, MD	University of Alabama at Birmingham
Geraldine E. Menard, MD	Tulane University
Michael J. Mugavero, MD, MHSc	University of Alabama at Birmingham
Zeina Nahleh, MD	Texas Tech University HSC - El Paso
Boris C. Pasche, MD, PhD	University of Alabama at Birmingham
Dana Rizk, MD	University of Alabama at Birmingham
Steven M. Rowe, MD	University of Alabama at Birmingham
Sanjay Srivastava, PhD	University of Louisville
Victor J. Thannickal, MD	University of Alabama at Birmingham
Martin E. Young, D.Phil	University of Alabama at Birmingham

\*Associate member

Interested in becoming more involved with the SSCI?

Membership-wide nominations for service  
on the following committees are now open:

Membership	Finance	Publications
Website	Bylaws	Mentoring
		SRM Program

Don't sit on the sidelines. Be someone who wants and CAN make a difference in the Society.  
Interested members should contact Joan Kemp, SSCI Executive Director.

The SSCI would like broaden the participation of the membership in leadership. Members are invited to apply to be members of the Standing Committees of the SSCI. The committees primarily meet by conference call, generally 1-4 times year. If you are interested, please submit a letter of interest and your CV to Joan Kemp. One or 2 positions will be available on each committee, depending upon committee size.

Sincerely yours,

Robert T. Means, MD  
President

Monica M. Farley, M.D.  
Secretary-Treasurer



**What's news at  
 The Journal?**

Our October issue introduces a new series entitled "What's Up Doc's". This section will publish a series of eclectic articles that the Editor may solicit from some select authors, may consider as an author-initiated submission, or may contribute personally. The content will be wide-ranging from, perhaps, social commentary, to humor, medical ethics or perhaps medical education. We may choose to subject these manuscripts to peer-review to ensure accuracy of factual content, but generally the editorial office will select this material for publication. We hope that you will find these contributions interesting and we welcome your comments.

The AJMS recently initiated a case-based series on clinical reasoning. The purpose of the series is to provide additional education and focus on the art and science of clinical reasoning. This aspect of diagnosis and treatment of patients receives scant attention, yet is involved in all of medical care and is a frequent source of medical error. Format for the series is an interesting case write-up, followed by a discussion of the principles of clinical reasoning which were applicable or illustrated by the case, and then a brief review of the diagnosis or the medical problem( this format will expand upon the traditional case report). We welcome any such submissions to this series.

We thank those members of the SSCI who have submitted papers and/or review manuscripts for *The AJMS*.

We continue to seek and encourage submissions from the membership, particularly from trainees and junior faculty.

Trainee Research Report  
 Purpose: To provide students & other trainees not participating in a full-time research experience a venue for publication of their data in a focused, small scope report. Additional details can be found on our website.

**Our impact factor increased this year from 1.1257 to 1.391!**



**Mission Statement**

The Southern Society for Clinical Investigation is dedicated to the advancement of medical research and the exchange of knowledge, information and ideas. Its members are committed to mentoring future generations of medical investigators and promoting careers in academic medicine.

**Vision**

The Southern Society for Clinical Investigation will be recognized as the premier regional society supporting the advancement of medical research by sponsoring an annual meeting, recognizing excellence in academic medicine, developing programs specifically to support young medical investigators and publishing *The American Journal of the Medical Sciences*.

You can now read AJMS articles using your internet-enabled mobile device? Check out "Mobile View" at [www.amjmedsci.com](http://www.amjmedsci.com)