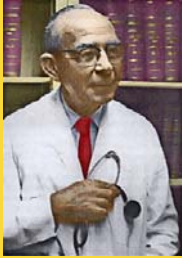


Tinsley Randolph. Harrison, M.D.
1900 -1978



Southern Society for Clinical Investigation

July 2014 Newsletter



SSCI Officers

Daniel Villarreal, MD
President

Tonette Krousel-Wood, MD, MPH
President-Elect

Monica Farley, MD
Secretary-Treasurer

Gailen Marshall, MD, PhD
Secretary-Treasurer Elect

SSCI Executive Director

Joan G. Kemp
UAB Comprehensive Cancer Ctr
1824 Sixth Avenue South
WTI 205
Birmingham, AL 35294-3300
205-934-5077 (ph)
joankemp@uab.edu

The American Journal of the Medical Sciences

David W. Ploth, MD, Editor
Kathleen Kelly, Managing Editor

In This Issue Page

2014 SRM Recap & SSCI Young Investigator Award Requirements	2
Committee Reports	3-5
2014 New Members	5
2015 SRM Meeting, 2015 Presidential & Joint Plenary Symposium	6
2015 Founders' Medal Recipient & 2014 Club Dinners	7
What's New for SRM 2015 & Visiting Professor Program	8
NEW: Mentor of the Year Award Requirements/ Nomination Information	9
AJMS Update & the SSCI's Mission Statement	10

~ ~ ~ Message from the President ~ ~ ~

Dear Colleagues and Friends,

To expand on the success of this year's annual meeting, the SSCI Council and the leadership of our sister societies met in Atlanta in June to review progress and new initiatives in preparation for SRM 2015. It is a pleasure to inform you that our mission to foster education and research has been invigorated with the recently created Fund for Academic Medicine, a philanthropic program aimed to foster our gifted young trainees. We currently seek support from our membership, and in the near future, we plan to compete for gifts from charitable foundations and corporations. In addition, forthcoming new projects for 2015 include focused state of the art workshops for professional enhancement and development of young faculty, as well as the creation of the SSCI's Mentor of the Year award to recognize outstanding teachers and counselors from our organization. Also, our website is in the process of being upgraded to enhance and promote our societies visibility, value, and academic content.

In this newsletter, look carefully for the deadlines for abstract and young investigator award submissions.

The membership nomination deadline is September 15, 2014. Information regarding this process can be found on our website www.ssciweb.org. The society encourages you to nominate successful and qualified members from your institution or other academic centers. A thriving membership is fundamental to sustain our scholarly objectives.

Our next annual meeting will be held on February 26-28, 2015 at the InterContinental New Orleans. I look forward to seeing you at SRM 2015.

Daniel Villarreal, MD ~ President

Call For Abstracts for 2015 Southern Regional Meeting

Visit the SSCI website: www.ssciweb.org

For more information about the
Call for Abstracts and SSCI Nephrology Young Investigators' Forum

Abstract Deadline is October 10th

Please encourage your colleagues and trainees to submit their work and attend our exciting and stimulating scientific sessions and workshops.

Abstracts being presented at the 2015 Southern Regional Meeting will be printed in January's issue of *Journal of Investigative Medicine*.

Recap of the 2014 Southern Regional Meeting

The Southern Regional Meeting, held this year February 20 - 22 was a resounding success. The meeting attracted 677 attendees and 591 abstracts. In keeping with the SSCI mission, the SSCI presented 37 awards, including several young investigator awards in multiple categories. In addition, the annual SSCI's poster award competition was very successful. In collaboration with the S-AFMR, 143 junior faculty, trainee, and student travel awards were presented. The combined investment of these awards totaled \$73,750, with approximately 75% (\$54,350) of this amount provided by the SSCI. The Tinsley Harrison award, which is an annual distinction bestowed to the best original manuscript to *The AJMS* in the previous calendar year, was presented to Dr. Ravindra Bhardwaj from West Virginia University for his work titled "*Differential Diagnosis of Acute Pericarditis from Normal Variant Early Repolarization and Left Ventricular Hypertrophy with Early Repolarization: An Electrocardiograph Study*".

One of the major highlights of our meeting is the presentation of the Founders' Medal Award, which was created in honor of Dr. Tinsley Harrison. This year's recipient was

Dr. Jesse Roman from the University of Louisville. Jesse's vision and leadership have contributed to our society's enrichment and success. His passion and dedication are an inspiration for the current and future members of the SSCI.

The combined Society Joint Plenary session this year bridged pediatric and adult medicine with a program entitled "Transition - More than Graduating to the Cliff's Edge: Examining the Evidence that Good Transition is Good Care". The excellent presentations discussed transitional care from adolescent to adult populations in congenital heart disease and cystic fibrosis. The SSCI Presidential Symposium on "Endothelial Dysfunction in Injury and Inflammation" was outstanding and provided critical insight into pathophysiologic mechanisms and therapeutic strategies on the metabolic syndrome and liver disease.

If you did not attend SRM 2014, please join your colleagues and bring your trainees to SRM 2015, which will be held February 26-28 at the InterContinental New Orleans.

NEW: There will be only one membership nomination deadline – September 15. Information regarding this process can be found on our website www.ssciweb.org. The society encourages you to nominate successful and qualified members from your institution or other academic centers. A thriving membership is fundamental to sustain our scholarly objectives.

SSCI Young Investigator Awards

The SSCI Young Investigator Awards are offered to recognize and encourage excellence in investigation by physicians and medical students during research training.

Eligibility: Medical students, combined MD/PhD students, interns, residents and post-doctoral physicians who are in research training or were in research training June 2014 are eligible. Post-doctoral research training may be considered to extend for a period of up to 3 years and time spent in strictly clinical fellowships need not count against this. The applicant must be

the 1st author of the abstract submitted in competition for the award and will plan to present the paper during the scientific sessions of the Southern Regional Meetings. Please note that it is not necessary for the senior author to be a member of the SSCI.

Procedure: Abstracts will be submitted for the 2015 Annual Meeting of the Southern Society for Clinical Investigation according to the usual procedure described in the instructions on awards consideration accompanying the abstract form.

Deadline: The submission deadline of the abstracts and application for the SSCI Young Investigator Award is **October 10, 2014**.

****Please note that nomination letters from the senior investigator or mentor and the Division Director or Department Chairman are required and should include a statement of the candidate's role in the study. In order to be eligible for consideration of these awards, the nomination letter(s) should be uploaded on the website at the time of abstract submission.**

"Dues" and Don'ts...When paying your dues, you will now see a line for donating to the SSCI. All donations will receive a thank you letter with required IRS information, so DO give generously and DON'T miss an opportunity to support the SSCI!

SSCI COMMITTEE UPDATE

Fundraising Committee

Committee Chair, Jesse Roman
University of Louisville

The finances of the SSCI are strong. However, the SSCI is interested in expanding its mission in order to enhance academic internal medicine through faculty development, research and education. Resources, however, are needed to extend our footprint in these areas further. Recognizing the potential impact that philanthropy can play in these efforts, the SSCI established a Fundraising Committee to develop a fundraising strategy. After careful evaluation and considering the potential for this endeavor to enhance our programs, the committee recommended hiring a fundraiser and establishing initiatives that would enhance fundraising within and outside of our organization. To this end, Nan Jeffreys, prepared an analysis of the organization's potential for fundraising and developed a plan. Initiatives included the identification of potential donors, the development of documents defining our goals, and the preparation of activities designed to foster this endeavor. The program started in November 2013 and has already shown promise.

To emphasize the importance of this initiative, the SSCI established the **Fund for Academic Medicine** which has now grown to over \$75,000 in gifts and pledges since the beginning of the year thanks to the generous support of many. Our goal is to use these resources to:

- ◆ Sustain support for the travel awards.
- ◆ Maintain the quality of the meeting despite the loss of corporate underwriting.
- ◆ Provide the annual meeting "all year round" by being able to record and distribute presentations, etc.
- ◆ Upgrade our website and its educational offerings.

Please see page 4 for a list of our generous member supporters this year. Unrestricted gifts today have ranged between annual, cash gifts of \$50 to \$10,000. Gifts restricted to support a particular area of medicine, lectureship, scholarship or travel award have ranged from \$1 to \$25,000 either annually or over a period of up to five years.

Each and every one of these gifts is important, makes a difference, and ensures our continued ability and commitment to serve our mission to promote the highest levels of scientific medical inquiry, and to nurture the next generation of clinician scientists. For more information or to make a gift, please contact Joan Kemp at joankemp@uab.edu.

***The SSCI is dedicated to keep our mission alive and healthy, for 2015 and beyond,
but we need your support. So, how can you help?***

The SSCI is pleased to report that its Fund for Academic Medicine has grown to over \$75,000 in gifts and pledges since January. Many thanks to all who have contributed! For more information or to make a gift, please contact the SSCI office.

Over the last few years, the SSCI has lost essential all of our pharmaceutical industry funding for our annual meeting. Successful fundraising will ensure that:

- * We can provide for all current travel awards.
- * Maintain the quality of the meeting despite the loss of corporate underwriting.
- * Provide the annual meeting "all year round" by being able to record and distribute presentations, etc.
- * Upgrade our website and its educational offerings.

The SSCI would like broaden the participation of the membership in leadership. Members are invited and encouraged to apply to be members of the Standing Committees of the SSCI. The committees primarily meet by conference call, generally 1- 4 times year. If you are interested, please submit a letter of interest and your CV to Joan Kemp.

Committees include: Bylaws * Finance * Mentoring * Membership * Publications * SRM Program * Website

Don't sit on the sidelines. Be someone who wants and CAN make a difference in the Society!

SSCI COMMITTEE UPDATE (continued)

President Daniel Villarreal, M.D. and the Council of the Southern Society for Clinical Investigation (SSCI) gratefully acknowledge the following donors for their leadership gifts and pledges in support of the SSCI Fund for Academic Medicine. The Fund supports travel and other awards in concert with the Society's mission to mentor future generations of medical investigators and to promote careers in academic medicine.

Frank Anania, MD	Diane Kamen, MD	David Ploth, MD
J. Claude Bennett, MD	Peter Kohler, MD	Jules Puschett, MD
Gerald Berenson, MD	Marie Krousel-Wood, MD	Jesse Roman, MD
Michael Bronze, MD	C. Seth Landefeld, MD	Charles V. Sanders, MD
Brad Burlew, MD	Ken Leeper, MD	David Schulman, MD
Sushma Cribbs, MD	Charles Mansbach, MD	Solomon Solomon, MD
Patrice Delafontaine, MD	Gailen Marshall, MD, PhD	Gerald Staton, MD
Dr. and Mrs. Richard deShazo	Greg Martin, MD	Viranuj Sueblinvong, MD
Marian Evatt, MD	Richard McCallum, MD	Vin Tangpricha, MD, PhD
Xian Fan, MD	Michael McPhaul, MD, PhD	Michael Ullian, MD
Monica Farley, MD	Robert T. Means, Jr., MD	Daniel Villarreal, MD
Stephen Geraci, MD	Jim Oates, MD	Dr. & Mrs. Karl T. Weber
David Green, MD	Dr. and Mrs. John Oates	C. Mel Wilcox, MD
David Guidot, MD	Rafael Perez, MD	Cherry Wongtrakool, MD
Michael Hart, MD		
Octavian & Adriana Ioachimescu, MD		

For more information about the Fund, or to make a gift, please contact Joan Kemp, SSCI Executive Director at joankemp@uab.edu, or go online to www.ssciweb.org. The SSCI is a 501C(3) not-for-profit organization. All gifts are fully tax-deductible according to law.

This list reflects all gifts received through July 1, 2014.

Publications Committee

Committee Chair: M. "Tonette" Krousel-Wood
Tulane University and Ochsner Health System

Over the last year, the committee has identified strategies to enhance the value of *The American Journal of the Medical Sciences* for its members and increase high quality peer-reviewed publications. We have expanded case letters, continued interest in review articles, and fostered publication of symposia issues. The most recently published symposium issue is entitled "Exploring demographic health differences: A Foundation for addressing Health Disparities in Cardiovascular Disease". http://journals.lww.com/amjmedsci/Fulltext/2014/08000/Exploring_Demographic_Health_Differences_A.1.aspx.

In the coming year, we are actively seeking high quality review articles, original research papers, and symposia issues for publication. Collaborations among our junior and senior colleagues in SSCI to prepare articles are an excellent way to foster professional growth, contribute to the mission of the SSCI, and disseminate knowledge. Based on our expanding membership of clinician-educators in addition to researcher/investigators, we are also interested in feedback and suggestions for enduring educational materials that can be sponsored by the SSCI.

Suggestions for expanding and improving publications to enhance our membership engagement are welcomed. Thus, the Publications Committee actively seeks nominations from the membership to assist with increasing the value and visibility of SSCI publications.

Please forward nominations and other comments to the committee chair at mawood@tulane.edu.

SSCI COMMITTEE UPDATE (continued)

Membership Committee

Committee Chair, Jesse Roman
University of Louisville

The membership of the SSCI has remained relatively stable throughout the past few years. The SSCI is proud to house some of the most talented academicians in the region and recognizes that our members represent the core of this organization. It is for this reason that the Membership Committee continues to look for ways to attract candidates for membership. This year, the committee updated the criteria for membership. It also reduced the number of dates for membership nominations to one time per year in order to allow division chiefs, chairs, and other nominators to focus their energy on this process. Finally, the committee hopes to engage members at each of the Southern academic centers to serve as liaisons for the SSCI and attract new

members to the organization. To provide recommendations or to participate in the activities mentioned above, please contact the committee chair at j.roman@louisville.edu.

2014 NEW MEMBERS

Ruth C. Campbell, MD, MSPH
Medical University of South Carolina

Jennifer A. Christie, MD
Emory University School of Medicine

Harry A. Drabkin, MD
Medical University of South Carolina

Molly Eaton, MD
Emory University School of Medicine

Elvira O. Gosmanova, MD
University of Tennessee HSC

Clifford J. Gunthel, MD
Emory University School of Medicine

Vanessa K. Hinson, MD, PhD
Medical University of South Carolina

Neeraj Jain, MD
Louisiana State University HSC

Jan-Michael A. Klapproth, MD
Emory University School of Medicine

Timmy Lee, MD, MSPH
University of Alabama at Birmingham

Kan Liu, PhD*
SUNY Upstate Medical University

Jorge Martin Rodriguez, MD
University of Alabama at Birmingham

Franck Mauvais-Jarvis, MD, PhD
Tulane University

Ruxana T. Sadikot, MD
University of Florida

Lynn M. Schnapp, MD
Medical University of South Carolina

Harold Smulyan, MD
SUNY Upstate Medical University

Titte R. Srinivas, MD
Medical University of South Carolina

Viranuj Sueblinvong, MD
Emory University School of Medicine

*Associate member

Mentoring Committee

Committee Chair: Dan Villarreal
Upstate Medical University, Syracuse, NY

Into its fourth year, the mentored poster session continues to be successful and well-received by trainees and mentors. In-depth and lively discussions included constructive criticism and advice on career development to the young clinician-investigators. As an additional measure of the continued SSCI support to trainees, the Mentoring Committee launched this year its first annual Poster Awards Competition, which was a resounding success. In addition, the SSCI established a Mentor of the Year Award Program to recognize outstanding teachers and counselors. Finally, as in previous years, we would like to express our gratitude to the poster presenters for all their dedication and efforts, as well as the mentors for their passion and commitment.

Please forward your comments/suggestions to the committee chair at villarrrd@upstate.edu.

Website Committee

Committee Chair: Jim Oates
Medical University of South Carolina

The website committee has sent out a call for proposals and have received three. These have been reviewed by the committee and have been refined so they can be compared on equal grounds. Three revised proposals have been received and are being summarized to report back to the committee for a final decision. Once a vendor has been selected, the website redesign will commence. This redesign is in collaboration with the Fundraising Committee so that the vision of the fundraising campaign is well represented.

We welcome your input. Kindly forward your suggestions to the committee chair at oatesjc@musc.edu.

THE 2015 SOUTHERN REGIONAL MEETING

The 69th Annual Meeting will be held February 26 - 28, 2015 at the InterContinental New Orleans.

Please make plans to attend as we have some special events planned for this meeting. Partners of this joint meeting include the Southern Section of the American Federation for Medical Research, Southern Society for Pediatric Research, Academic Pediatric Association, Southern Society for General Internal Medicine and the American Society of Nutrition.

The joint meeting will begin with subspecialty sessions and workshops, a welcoming reception and a mentored poster session Thursday afternoon followed by various subspecialty club dinners. Scientific sessions will start Friday morning.

HOTEL RESERVATIONS: Those who wish to make their reservations early, the hotel reservation form is also included

in the Call for Abstracts.

Register now at <https://aws.passkey.com/event/11655821/owner/110/landing>.

NOTE: To obtain the special room rate, be sure to use the reservation forms provided by the SSCI. When making your reservation by telephone, you must mention *Southern Regional Meetings*, or you will not receive the special room rate provided to members by the hotel. *Therefore, please indicate that you are attending the Southern Regional Meetings when making reservations.*

The deadline for hotel reservations at our convention rate and the hold on the room block is January 25, 2015.

SRM Meeting registration: <http://tulane.edu/cce/>



Dr. John C. Burnett, Jr. is Professor of Medicine and Professor of Physiology at the Mayo Clinic in Rochester Minnesota.



Dr. Delafontaine is Vice Chair, Department of Medicine, Professor of Cardiovascular Medicine, Chief - Section of Cardiology and Director at Tulane University Heart and Vascular Institute.

2015 SSCI Presidential Symposium
“New Perspectives of Pathophysiology and Management in Heart Failure”
Speakers: Drs. John Burnett & Patrice Delafontaine

2015 Joint Plenary Symposium
“From Childhood to Adulthood: Perspectives on Cardiovascular Disease in Females”
Speakers: Drs. Tonette-Krousel Wood and Suzanne Oparil



Suzanne Oparil is Professor of Medicine and Physiology & Biophysics, Section Chief of Vascular Biology and Hypertension and Director of the Vascular Biology and Hypertension Program at the University of Alabama Birmingham.

M.A. "Tonette" Krousel-Wood, MD is Associate Dean / Associate Provost for Health Sciences, Professor of Epidemiology at Tulane University School of Public Health and Tropical Medicine.



Founders' Medal—2015

Congratulations to
Monica M. Farley, MD
from Emory University, the SSCI's 2015
Founders' Medal Award recipient!



Did you know you can
renew your membership and
pay dues online?

SUBSPECIALTY CLUB DINNERS

THURSDAY, FEBRUARY 26TH STARTING AT 7:00 PM

Blood Club - speaker not confirmed

Bug Club speaker is James Dale, Division Chief of Infectious Diseases at University of Tennessee Health Sciences Center. Dr. Dale's presentation is entitled "*Group A Streptococcal Disease Burden and an Update on Vaccine Development*"

Endocrine Club speaker is Michael Holick, Professor of Medicine at Boston University. Dr. Holick will present "*The D-Lightful Vitamin D for Good Health*"

Gut Club speaker is Mainor R. Antillon of Boston University. Dr. Antillon will present "*Emerging Role of EUS in Management of Pancreatic and Biliary Diseases*"

Richard McCallum, club chair, will provide an update on *GI Motility Highlights in Adults*.
Mel Wilcox, Division Director of Gastroenterology at University of Birmingham at Alabama will speak on "*Sphincter of Oddi Dysfunction Type III: A Dead Disease?*"
Paul Hyman, Division Head of Gastroenterology at Louisiana State University will close the evening with *Highlights of Pediatric GI*.

Immunology Club speaker is Gailen Marshall, Professor & Vice Chair for Research at University of Mississippi Medical Center. Dr. Marshall's presentation is entitled "*Biomarkers for Inflammatory Diseases: Implications for Diagnosis and Management*"

Renal Club speaker is Allen W. Crowley, Jr., Professor and Chairman of the Department of Physiology at the Medical College of Wisconsin. Dr. Crowley will present "*Identification of Genes Contribution to Salt-sensitive Hypertension in the Rat*"

The Cardiovascular Club invites you to the following sessions:

State-of-the-Art Lecture to be held Thursday, February 26th at 11:00 a.m. Guest speaker is Sumanth Prabhu from the University of Alabama at Birmingham. Dr. Prabhu's presentation is entitled "*The Cardiosplenic Axis in Heart Failure.*"

The Karl T. Weber Distinguished Lecture in Cardiovascular Medicine, to be held Friday, February 27th at 11:00 a.m. Guest speaker is Louis Dell'Italia from University of Alabama at Birmingham. Dr. Dell'Italia will be presenting "*The Multiple Mechanistic Faces of Cardiac Volume Overload.*"

All are encouraged to attend.

What's new for SRM 2015?

Adding Value for Clinician Educators

With the changing face of academic medicine during the past decade, the SSCI developed a membership track for the Clinician Educator. This track was created to acknowledge the growing number of academic physicians that are primary clinicians and clinician educators. Although the SSCI has encouraged new members through this track, we recognize that the scholarly program of our Southern Regional Meeting and the content of our journal, *The American Journal of the Medical Sciences (AJMS)*, has not changed sufficiently to reflect the continuing educational needs of these new members. As the time and financial resources available to physicians for continuing education fall inexorably, SSCI leadership has committed to making changes that we hope will greatly increase the value of our meeting and journal to clinician educators. We appreciate the contributions from the SRM sister societies in their presentations on topics such as medical authorship and related topics useful to our clinician educators at past and future meetings. The SSCI now plans to make its commitment to these members.

The *AJMS* is now seeking submissions of clinical review articles, written specifically for clinician educators, for publication. The 2015 Southern Regional Meeting will include a 4-hour workshop on Friday February 27 entitled “*Career Development for the Clinician Educator*”. Access to the workshop is included in the registration fee. Experts will provide a series of presentations on a broad array of topics helpful for the professional growth and advancement of clinical academicians. Topics will include creating career development plans; scholarship, promotion and tenure; choosing projects; CVs and documentation; educational research; mentors and mentoring relationships; and critical skill sets. A panel question and answer session will conclude the workshop. Dr. Stephen Geraci, Chair of Internal Medicine at Quillen College of Medicine will chair this novel workshop (geraci@mail.etsu.edu).

Plans are to grow the clinician educator-directed content of our future Southern Regional Meetings, to increase presentations of educational research presentations and posters; mentoring sessions; workshops on specific skills and abilities critical for the successful educator; and member-generated topics received via feedback from our attendees. We welcome suggestions for new content from our academic clinician members, and encourage residents and fellows planning such careers to join SSCI and attend the February meetings.

New Club Luncheon Scheduled at the 2015 SRM

The SSCI is pleased to introduce the *Southern Epidemiology and Population Health Club*. Co-founded by Drs. M. Tonette” Krousel-Wood of Tulane University and Paul Muntner of the University of Alabama at Birmingham, the inaugural meeting of the *Southern Epidemiology and Population Health Club* will be held Friday, February 27, 2015. The purpose of this ‘club’ is to foster engagement and collaborations of SSCI members and our SRM colleagues conducting epidemiological and population health research, provide guidance to residents, fellows, and junior colleagues, and increase poster and oral presentations at the annual Southern Regional Meetings.

Details regarding the inaugural meeting will be forthcoming. Those interested in joining the club should contact Tonette Krousel-Wood (mawood@tulane.edu) or Paul Muntner (pmuntner@uab.edu). We look forward to your participation!

SSCI Visiting Professor Program: The SSCI continues to have an unwavering devotion to its tripartite mission: the advancement of overall knowledge and sharing of incremental knowledge, information and ideas; a commitment to the mentoring of future generations of medical investigators; and fulfillment of its vision.

The VPP’s purpose: to sponsor senior members of the Society who would volunteer their time and share their knowledge through a visitation to an academic medical center. The visit is sanctioned by the SSCI through the formal approval of a submitted application by the hosting center. The application would include the agenda and specific objectives of the visit. A Visiting Professor Program Committee of the SSCI Council would make the determination of applicant selection.

Three visiting professor programs were approved by Council for 2014, which include: Dr. Richard deShazo, Professor of Medicine at the University of Mississippi as guest speaker at Marshall University; Dr. Karl T. Weber, Professor of Medicine at the University of Tennessee Health Science Center to speak at University of Alabama at Birmingham and Dr. William Weglicki, Professor of Medicine at George Washington University Medical Center.

The 2015 application deadline is December 15th. We greatly encourage you to utilize the valuable resources available to your students/trainees/fellows within the SSCI. For more details about this program and how your institution can enhance its training opportunities, please visit www.ssciweb.org.

NEW FOR SRM 2015 SSCI MENTOR OF THE YEAR AWARD

Mentoring is a fundamental determinant of success in the biomedical sciences and is a major mission of the SSCI. These awards recognize outstanding mentors who are members of our organization and who have demonstrated a longstanding commitment to mentoring students, trainees, and/or junior faculty. Moreover, through their positive impact on the mentee's careers, they have advanced medical education and research for the benefit of the community at large.

Awards Criteria

Mentor award nominations will be evaluated based on the positive educational and/or research experiences of the mentors' trainees, including the impact of mentorship on their subsequent professional and personal success. Key roles of a mentor include:

- ⇒ A wise and trusted advisor
- ⇒ Intellectual growth and development
- ⇒ Career and professional guidance
- ⇒ Positive role modeling

Award Categories

- ◆ Student Mentor (includes medical and graduate students)
- ◆ Postgraduate Mentor (includes residents, fellows and other postdoctoral trainees)
- ◆ Junior Faculty Mentor

Eligibility Criteria

Nominees must be SSCI members in good standing.

Nominees may include physicians, scientists, and educators in the various clinical disciplines of the biomedical sciences. Nominees should have a sustained outstanding record of mentoring over time.

Nominators must be a previous or current mentee(s) of the mentor or be a colleague of the nominee with personal knowledge of the nominee's mentoring qualities and excellence.

There must be a primary and secondary nominator providing written nominations and documentations.

Ineligibility Criteria

- Previous recipients of the SSCI's Mentor of the Year Award are not eligible.
- Incomplete applications will not be considered.
- Self nominations will not be accepted.

Nomination Packages

The nomination packages must include:

- a. Primary and secondary nomination letters including nominators' relationship to nominee
- b. Nominee's curriculum vitae
- c. List of former and present mentees with current status/location

Nominating letters should summarize the nominee's impact on mentoring with clear examples of the positive outcomes on students, trainees, and/or junior faculty. If the nominator(s) is a mentee, a narrative of how the mentor influenced his/her career (s) and those of others should be included.

Nominations will be reviewed and scored by the SSCI Mentoring Committee based on the award criteria outlined above.

Nominations should be submitted to Joan Kemp at joankemp@uab.edu no later than **October 31, 2014**.

Notification and Award Presentation

Award recipients will be notified by mid-December. The award presentation ceremony will be held during the SSCI/SRM meeting February 26-28, 2015.

Have you recently changed institutions? Perhaps your email address or phone number has changed or you've been promoted. If so, please take a quick moment to update your profile online at www.sscweb.org. This will help us keep you up-to-date on Society news. While you're there, why not sign up to be a mentor, update the Classification, Research and Educational Interests fields and upload a recent photo!

**Our impact
factor
increased from
1.334 to 1.515!**

We thank those members of the SSCI who have submitted papers and/or review manuscripts for *The AJMS*.

We continue to seek and encourage submissions from the membership, particularly from trainees and junior faculty.

Trainee Research Report

Purpose: To provide students & other trainees not participating in a full-time research experience a venue for publication of their data in a focused, small scope report. Additional details can be found online, in the Instructions for Authors.

What's news at The Journal?

David W. Ploth, MD ~ Editor-in-Chief

Plagiarism

We have observed a sharp increase in the number of incidents of plagiarism at *The Journal* in the past few years. Recently, *The American Journal of the Medical Sciences* adopted the systematic use of anti-plagiarism software that we use to examine every accepted manuscript prior to being sent to the publisher. Our experience seems to reflect plagiarism, although other forms of authorship impropriety are being documented with increasing frequency at the national level (data manipulation, data forgery, data theft, and others). Many experts have commented on the explanations for this unfortunate trend. Suffice to say, we find it very disturbing.

Young investigators, trainees and students need to be aware of this shortcut to unacceptable and perhaps career-ending behavior.

Have you updated your journal profile lately? You're just a few keystrokes away: editorialmanager.com/maj.

While you're there, why not update your areas of interest/specialty in the keywords section.

Mission Statement

The Southern Society for Clinical Investigation is dedicated to the advancement of medical research and the exchange of knowledge, information and ideas. Its members are committed to mentoring future generations of medical investigators and promoting careers in academic medicine.

Vision

The Southern Society for Clinical Investigation will be recognized as the premier regional society supporting the advancement of medical research by sponsoring an annual meeting, recognizing excellence in academic medicine, developing programs specifically to support young medical investigators and publishing *The American Journal of the Medical Sciences*.